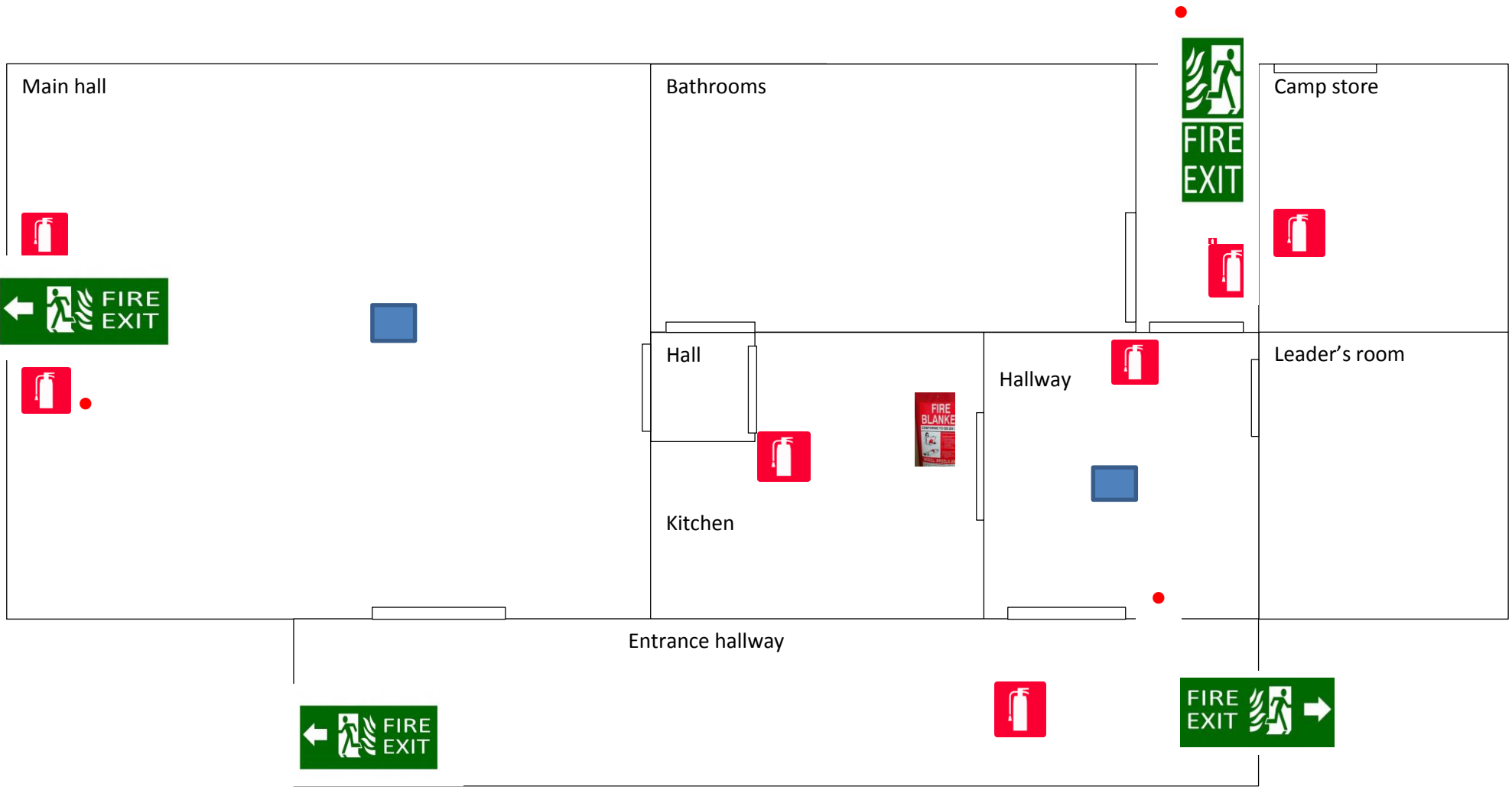





Fire Safety Risk Assessment for Ladenford Den

Possible causes of fire	What could catch fire	Risks	Who could be affected	Control Measures
Faulty electrical system	Any material close to the source of the fault (e.g. the cupboard in which the consumer unit is located, skirting boards, plaster board, wood panelling)	Smoke inhalation Burns Death	All users	Electrical system and infrastructure inspected every five years. Any faults to be reported and repaired promptly
Faulty portable electrical equipment (e.g. kettles, toasters, radios, etc	The portable device itself and then any combustible materials close to it	“	“	All equipment to be PAT tested Ensure suitable (not water) fire fighting equipment is available close to the likely sources of electrical fires.
Kitchen appliances (i.e. hob, oven, fridge, kettle, microwave	The appliance itself and then any combustible materials close to it	“	“	Faults repaired promptly Ensure suitable (not water) fire fighting equipment is available close to the likely sources of electrical fires.
Smoking Material in waste bins or any other areas where cigarettes may be left or disposed of	The waste bins or surrounding area	“	“	No Smoking signs will be strategically placed throughout the building
Cooking accidents Hot oil igniting on the hob or under a grill. Food burning in the oven or on the hob.	The hob or oven involved, and then the kitchen	“	“	Users should not leave food cooking unattended, and young people should be supervised at all times. Ensure there is a fire blanket available close to the hob, for putting out oil fires.
Arson	Whole premises	“	“	Ensure Hall hirers are aware of their responsibility for the Hall during their occupation and take reasonable steps to prevent wilful damage and lock up on departure.
Open fire, candles and other naked flames	The fire surroundings, the chimney, candles and combustible materials close to them	“	“	Ensure fires/naked flames are supervised by adults Chimney to be checked/swept annually



 =  Fire alarm
 = Smoke detector